

# Sparkelec Smart Dimmer Module

User Manual



A variety of common lamps



bulbs downlights spotlights  
SAA | CE | RoHS

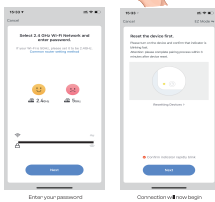
## Add dimmer module to your App

1. Use the cable wire to connect the gateway and router.
2. Open "Sparkelec Smart Home" click top right "Add".
3. Choose "Gateway and others" and choose the "gateway". Click next until finished.



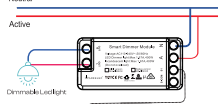
ZigBee gateway

4. Press the reset button five times, then hold for 5 seconds until the LED indicator starts flashing. Open the Smart Life app, tap the "+" icon in the top right corner, select "Electrician", then choose "Switch (ZigBee)", Click Next, select your gateway, and follow the on-screen steps until setup is complete.



## Installation

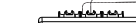
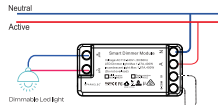
1. Direct control via mobile phone. No additional wiring required.
2. For Sparkelec Smart Touch ZigBee Switches Only.



**Notes:**  
This smart touch switch only has the on/off control function.

- Advantage:**
1. Smart touch switch control by phone.
  2. Smart dimmer module control by phone.

2. For press-button switch



- Advantage:**
1. No need change the cable press touch switch can be dimmer.
  2. Smart dimmer module control by phone.

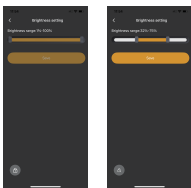
## Operation & Setting output lamp value

Using your Sparkelec Smart Home app, you can turn this device ON/OFF, Multiple Themes selection (Dark/Light)



## What can I do if lights flicker?

Flicker happened when the LED lights is working, We can adjust brightness setting. Open the smart dimmer module Click "Setting" then choose "Brightness setting".



## Features

1. Mini Size Design - can be installed in most areas.
2. Turn devices on or off from anywhere through the app.
3. Power metering function.
4. Check lamp status in real time.
5. Memory for last state after power failure.
6. Supports two-way control via the app.
7. Multiple theme options (Dark/Light).
8. Supports Amazon Alexa, Google Assistant, etc.
9. Compatible with Hager and LED Trailing Edge Dimmable Fixings.

## Connect Your ZigBee Hub

Ensure your ZigBee Hub is connected to the nearest ethernet port with internet access.

## Download the Sparkelec Smart Home App

Please download the free app from the App store or Google Play store, or scan the QR code below.



Scan Me

Scan Me



Open the Sparkelec Smart Home App, for new users, register a new account or if existing user, login with your user name and password.

## Power metering function

### Electric stats

This allows you to monitor the power usage of connected loads (current, power, voltage and kWh).

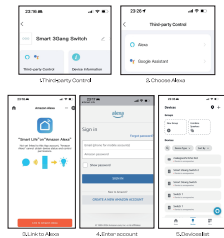
The values show you the total of all gangs per wall plug. These values are for reference only.



## How to connect Amazon Alexa and Google Home

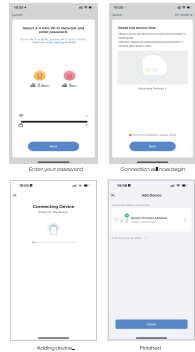
Add the Smart Switch to Alexa/Google Home following this instructions below:

Open Sparkelec Smart Home App, go to "Profile" > Integration, tap "Amazon Alexa" or "Google Home" and install.



## Add dimmer module to your App

1. Arrange installation of your dimmer module by licensed electrician contractor (refer installation instructions at start of this manual).
2. Once safely wired and powered on, click reset button five times consecutively and rapidly then hold the button for 5 seconds until the LED start to blink rapidly.
3. Open "Sparkelec Smart Home" Click top right "+" then choose "Electrician", then choose "Switch (BLE/WiFi)", On turn on mobile Bluetooth, it will search the device automatically.



## Specification

Dimension: 75x35x28MM  
Voltage: AC 100-240V~ 50/60Hz  
Max Load: Max 167A, 400W/gang  
Dim Load: LED Max 167A, 400W/gang  
Incandescent Max 167A, 400W/gang

### Warning

1. To prevent injury, this apparatus must be installed by a Licensed Electrical Contractor.
2. For indoor use only. Please make sure the smart switch is not overloaded.
3. Working power cannot be higher than the rated power (20~400W Dimmer-LED, 400W incandescent).

### Warranty

This warranty covers defects in manufacturing that arise from the correct use of the device. It is limited to defects in materials or workmanship and does not cover damage caused by abuse, misuse, unauthorised modification, power surge damage or external heat or other corrosive environments. The warranty also does not cover the normal wear and tear on covers, cases, housings, connectors and accessories. The warranty does not apply to any product with missing, altered or defaced serial numbers. Your products come with 24 months manufacturer's warranty as standard.

SPARKELEC®

Product Manufactured & Distributed by Sparkelec Pty Ltd.