



# Clipsal Iconic™ Range

## Range Overview

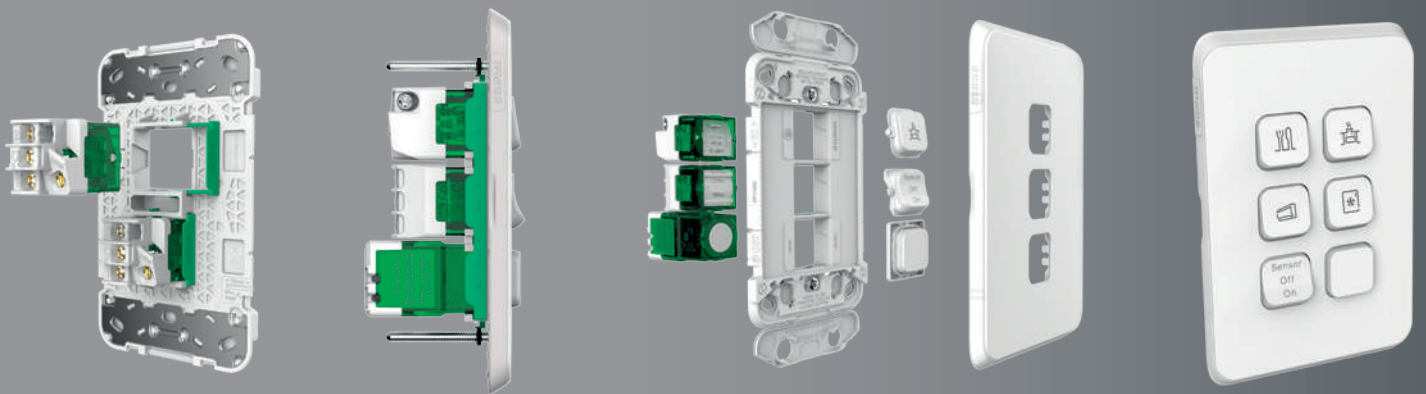
[clipsal.com/iconic](https://clipsal.com/iconic)

Life Is On

**CLIPSAL**  
by Schneider Electric

# Clipsal Iconic™ Collection

Introducing our next generation platform  
designed with electricians for electricians.





Clipsal Iconic™ is a modern electrical accessories range, based on a slim, sleek, clean design that is easy to customise and blends in with your environment.

It's loaded with clever features.

**New game changing modular** mechs and grids with changeable skins and dollies for unrivalled customisation now and in the future.

**With new ControlLink**, lights can be dimmed from multiple locations, plus you can link switches, dimmers, and time clocks together.

**Patented locking bar** allows simple mech reorientation and sturdy locking for a fast, easy and secure install, reducing the risk of mech pushbacks.

**Clipsal Iconic's translucent edges** allow the skins to pick-up background colours for a design that blends in with any wall colour.

Customisable and future-ready.

**Innovative protective flaps** help prevent screw access after installation, allowing skins to be changed safely at any time.

**Clipsal Iconic switches** are quick and easy to personalise with pictogram dollies that even your customers can change.

**Bluetooth Low Energy** delivers simple configuration for timers and time clocks via the Wiser Room App on your phone or tablet.

**Clipsal Iconic is future-ready** allowing for style and function updates in the coming years.

# New Functionality



Night Walk sensor light



Modular design



3-socket USB charger with shelf

## Clipsal Iconic™ features changeable skins, innovative features and enhanced connectivity.

In this all-new platform, we've thought of everything including new sockets, switches, dimmers and timers, USB chargers, new safety features, Bluetooth Low Energy connectivity and more. We've also designed Clipsal Iconic with features that greatly simplify installation, and developed new products for safer, smarter homes.

### All-new 40 mechs

Clipsal Iconic switches and electronic accessories feature the all-new 40 mechs designed for optimum flexibility in up to 6-gang grids. The grids make changing from vertical to horizontal orientation simple, and patented locking bars reduce the risk of mech pushbacks.

### New innovations

Clipsal Iconic introduces a new 3-gang USB charger with shelf. A new Night Walk skin, which replaces the standard double socket skin, features an integrated motion sensor that switches on when it detects movement. LEDs illuminate the way when someone gets up at night, without disturbing others.

### Clever efficiency

Clipsal Iconic electronic accessories deliver clever efficiency to the home. New Bluetooth Low Energy connectivity and our own ControlLink technology offer simple control, configuration and connectivity. The Wiser Room app lets you configure it all exactly to your customer's taste.

### Enhanced connectivity

Clipsal Iconic includes a comprehensive range of options for all modern network connectivity requirements. With mechs for RJ45 networking, HDMI sockets and audio cable entry plates, you have everything you need for complete home networking.

# Designed to Suit a Range of Décor



Optional skin colours



Easy skin changes



Optional pictograms identify functions

## A range of skin colours

Clipsal Iconic™ offers unlimited flexibility to suit any interior design, with standard white skins, plus subtle colour variants that blend in with background wall colours.

## Changeable skins

Clipsal Iconic grids and skins can be ordered separately. Innovative protective flaps help prevent screw access after installation, allowing skins to be changed safely at any time. That means, if a customer ever changes their mind, or would like skins of a new colour or style, they can change them by themselves any time they like.

## Colours that blend in

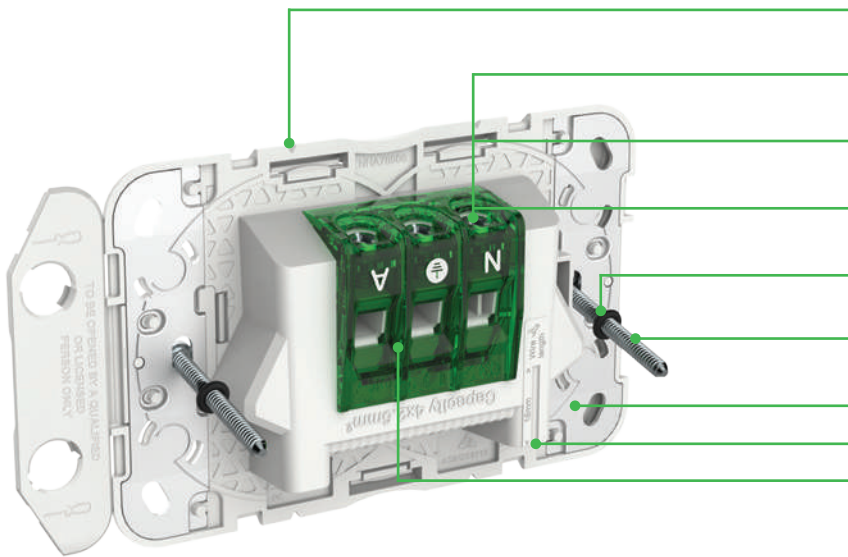
Clipsal Iconic offers three skin colour variants in addition to the standard Vivid White. Warm Grey is subtle and inviting, evoking relaxation with its sandy tones. Cool Grey is crisp and clean, enhancing cooler tones. Anthracite is deep and strong to blend in with richer, deeper wall colours.

## Pictograms highlight functions

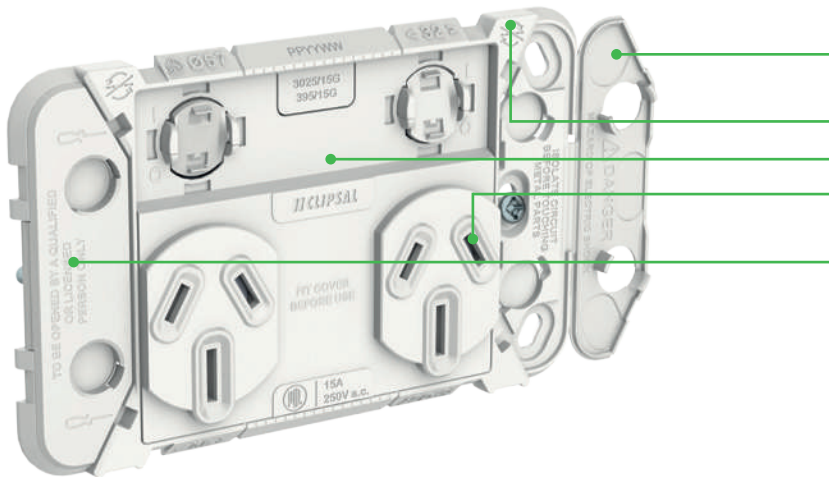
Clipsal Iconic has the option to personalise switches with icon dollies to make it easy to identify functions in multi-gang switches. You simply click out the plain dollies from the skins, and replace with pictogram dollies. There is a pictogram for a wide range of functions.

# Sockets With a Difference

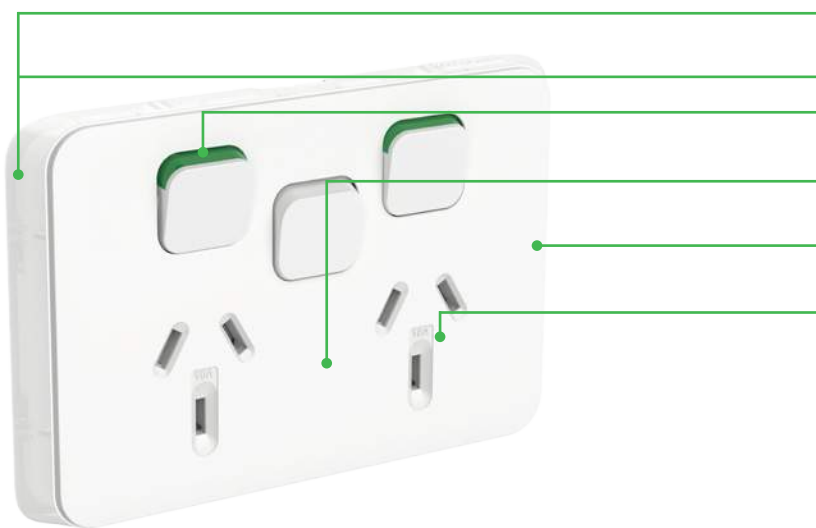
Clipsal Iconic™ features adaptable skins to change functionality at time of install, or in the future.



- Hole centre indicators for using a 57mm hole-saw for installations
- Captive terminal screws to prevent them from coming out
- Large terminals accommodating up to 4 x 2.5mm cables
- In-line terminals for easy screw access and faster termination
- Pre-mounted screws for faster fit off, O rings prevent screws dislodging during transportation
- 84mm mounting centres fit standard mounting accessories
- Metal plate for additional robustness
- Strip length indicator
- Clear cover showcasing the new Iconic terminal



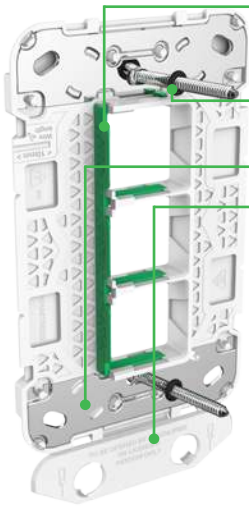
- Protective flaps help prevent direct access to the screws after installation
- Tapping pad for spirit level
- Socket grids are safe when installed
- All sockets come with internal shutters providing additional protection
- Safety message on the protective flaps clearly indicate they should only be opened by certified electricians



- Translucent edges allow the skin to infuse with the wall colour
- Slim 9mm profile blends in with the décor
- Green indicator so you know when it is switched on
- Wide space between sockets so it's easy to fit larger plugs
- A soft touch matte finish for a premium look and feel
- Clear markings for easy amperage identification
- Skin can be changed by the end-user at any time

# Clever Switch Innovation

Clipsal Iconic™ grids feature new flaps, drill guides and 40 series mechs for easy installs and customisation.

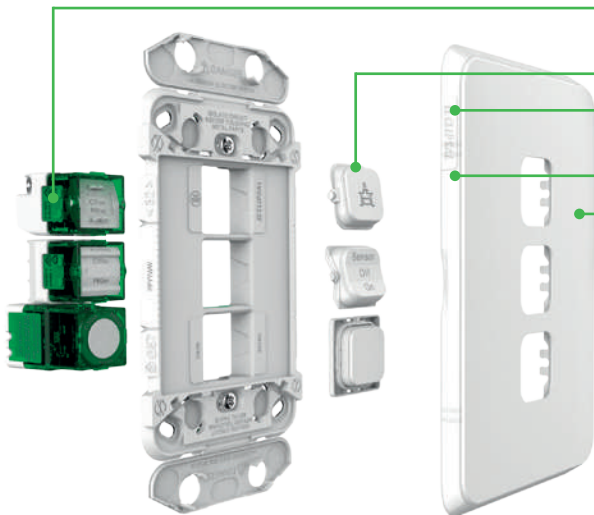


Patented locking bar helps to reduce the risk of mech pushbacks, and makes it easier to change or upgrade mechanisms

Pre-mounted screws for faster fit-off, O rings prevent screws dislodging during transportation

Metal plate for additional robustness

Protective flaps help prevent direct access to the screws after installation



All electrical accessories are now available in the new Iconic 40M format

Pictogram dollies to personalise switches

Translucent edges allow the skin to infuse with the wall colour

Slim 7mm profile blends in with the décor

A soft touch matte finish for premium look and feel



Optional warm white LEDs can be easily wired and set as locator or indicator

Screwdriver notch to aid removal from locking bar

New hybrid screws are suitable for square drive, Philips and flathead screwdrivers

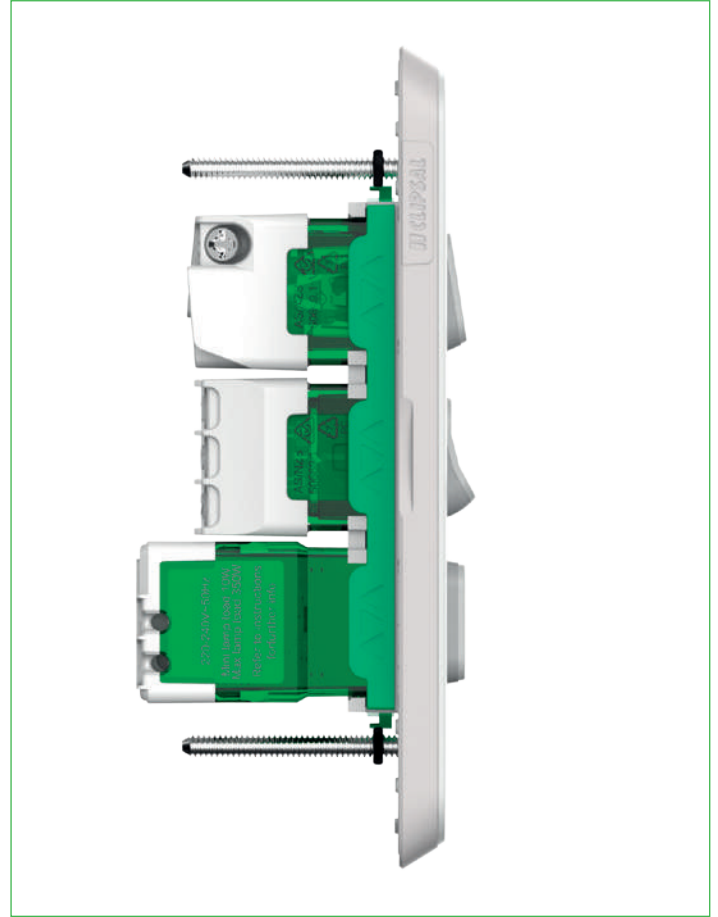
# Electronic Accessories



Smart device app configuration and our own ControlLink connectivity



USB mech with built-in current management and rotating heads



Electronic push button switches integrate with standard plates

## Clipsal Iconic™ electronic accessories are designed for clever functionality.

Electronic accessories fit Clipsal Iconic switch grids. Locking in with the mech locking bar, they can be easily changed to suit vertical or horizontal orientation. The range includes rotary dimmers, push button dimmers, electronic switches, timers, time clocks and USB chargers.

### Rotary and push button dimmers

Clipsal Iconic electronic products include both push button and rotary dimmers. Push button dimmers offer multi-way dimming over standard wiring. The tactile push button turns the load on/off or dims up or down. Rotary dimmers adjust light from 1-100% with configurable minimum brightness settings, and come with built-in re-settable short circuit and over-temperature protection.

### Time clocks

Clipsal Iconic time clocks are programmed via the Wisier Room app for 24 hour, 7 day scheduling. They're ideal for scheduling operating times for appliances like towel rails, garden lights, or hot water booster elements, and can be set to automatically track with seasonal sunrise and sunset changes.

### Electronic switches

Clipsal Iconic electronic switches feature the same tactile 'click' feedback as the push button dimmers when being operated. One click turns the switch on, and one click turns it off. The 3-wire 6A model offers simple in-room smart device app control.

### Timers

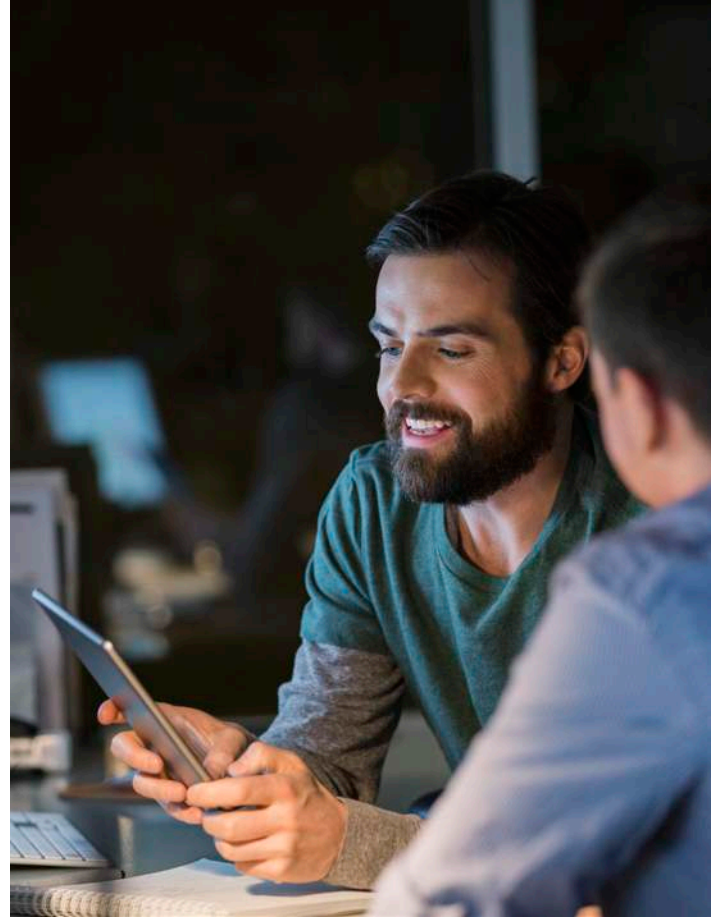
Clipsal Iconic timers are available in three models. The 350-watt timer can be configured to popular durations. The 3-wire 6 and 10 amp models can be programmed by the Wisier Room app for 1 second to 24 hour adjustable time delay and run-on capability. They're great energy savers for pantries, laundries and bathrooms.

### USB chargers

Clipsal Iconic USB chargers have a patented rotatable head for easy reorientation. They also include a patented current management technology, which reduces the output current to prevent overheating while minimising charge times.



## Electronic Accessories (cont'd)



Configure from the Wiser Room app

## With ControlLink and Bluetooth Low Energy for simple connectivity.

Multi-way dimming and switching control has become easy with Clipsal Iconic™.

### ControlLink connectivity

ControlLink allows for multi-way control of groups of lights, and for dimmers and time clocks to work together for enhanced functionality.

### Wiser Room app

Clipsal Iconic three-wire electronic products can be configured via the Wiser Room app on most tablets or phones to perform programmed tasks like:

- Exhaust fan run-on after bathroom lights have been switched off
- Operate heated towel rails and/or lights on 24hr/7day schedules
- Automatic seasonal sunrise and sunset tracking
- It's also easy to reset everything to your original set point

### Bluetooth Low Energy (BLE)

Clipsal Iconic three-wire mechs connect to the Wiser Room app via Bluetooth Low Energy. BLE saves energy, connecting only when required.

### Connectivity without complexity

ControlLink and BLE together offer unprecedented flexibility. ControlLink uses standard wiring and BLE is available on most phones and tablets for connectivity.

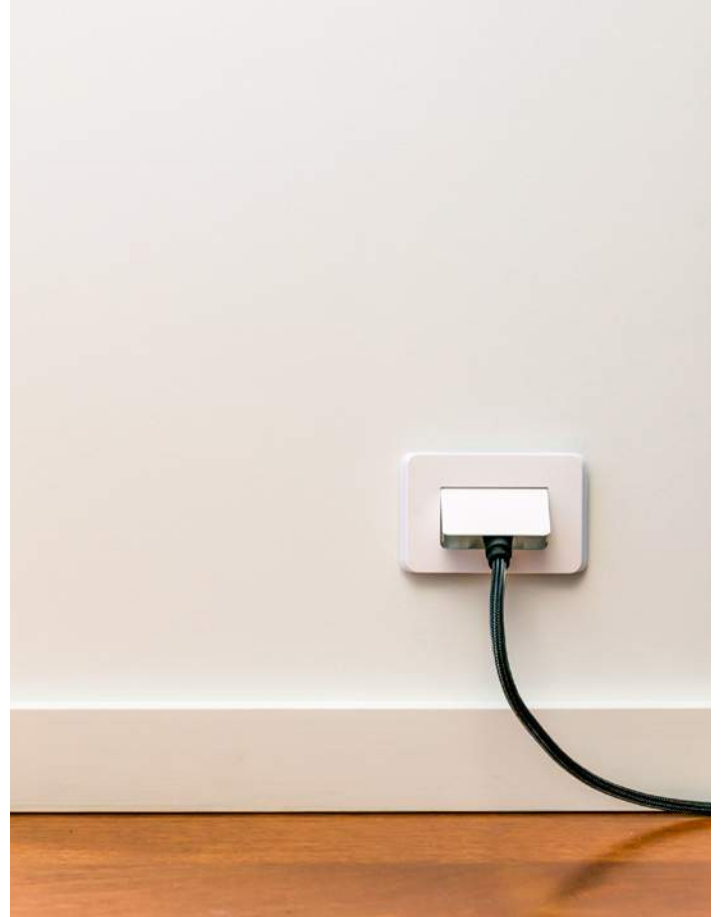
# Network Connectivity



Simplified network connector combinations



Cable Entry Plate



A wide range of network connectivity options

## Clipsal Iconic™ includes a wide range of network connectivity products for a professional home network.

Clipsal Iconic has a broad offer for home network connectivity, allowing you to meet customer requirements for networking, audio and video installations easily.

### Audio, video and networking

You can organise audio cables for sound systems via RCA connector mechs. TVs can be connected through F-type aerial connectors and HDMI cable mechs. RJ45 connectors can be used for home networking.

### Flexibility of 40 mech grids

No two home networks are the same, which is where the new NCO 40 mech connectors make every set-up much simpler. You can use combinations of mechs in up to 6-gang grids, ensuring that a broad range of end user requirements are available in the Iconic range.

### Actassi networking

Our range includes a wide range of functions from standard Cat5e, to Cat6, and premium performing Cat6A copper LAN solutions. Cat5e is ideal as a start for most home networking solutions, while Cat6 provides peace of mind with more reliable performance and bandwidth. Cat6A is our high-end solution for large and demanding applications.

### 40 Mech Adaptors

40 Mech adaptors allow for other branded RJ45 connectors to be installed into Clipsal Iconic grids should it be required.