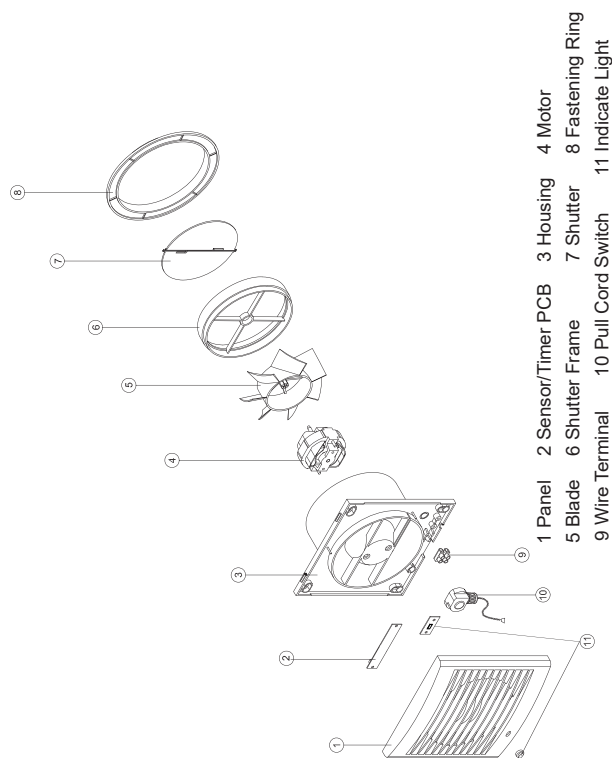


6 EXPLODED VIEW



7 CAUTIONS

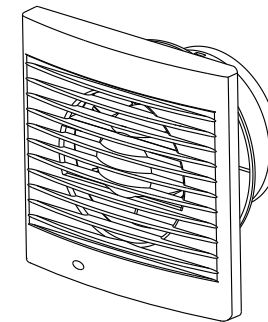
- 7.1 Installation height: more than 2.3m from floor.
- 7.2 Never install the fan into ceiling, or the place where it would be exposed to water splash, excess vapor or high temperature. Never install ducts into flue with poisonous gas.
- 7.3 When using switch to control power, avoid to turn on/off the switch frequently. Turn off switch if the fan is not used for long time.
- 7.4 Avoid the air back into room through the open flue or other open-flame appliances.
- 7.5 If the supply cord damage, must be replaced by staff specialist from maintenance department of manufacturer or similar specialized electrical personnel, using specialized cord or from manufacturer or maintenance department.
- 7.6 This appliance is not intended for use by persons (including children) with reduced physical, sensory or mental capabilities, or lack of experience and knowledge, unless they have been given supervision or instruction concerning use for the appliance by a person responsible for their safety. Children should be supervised to ensure that they do not play with the appliance.
- 7.7 A multi-pole switch must be used to install the appliance. The gap between switch continues must be no less than 3mm.
- 7.8 Vent cover should be installed to prevent the ingress of water and vermin.
- 7.9 The fan is not intended for mounting in outside windows or walls.
- 7.10 Exhaust fans may adversely affect the safe operation of appliances burning gas or other fuels (including those in other rooms) due to back flow of combustion gases. These gases can potentially result in carbon monoxide poisoning. After installation of an exhaust fan such as a partition fan or a duct fan the operation of open flued gas appliances should be tested by a competent person to ensure that back flow of combustion gases does not occur.

8 MAINTENANCE

- 8.1 Switch off power at first.
- 8.2 Using soft cloth to wipe off grease with natural cleanser. Never use water over 60°C, petrol, benzene, thinner or any other such organic solvent to clean. Do not allow water to enter into motor.
- 8.3 Dry the cleaned parts by itself or soft dry cloth. Then reset in turn.

SPARKELEC

Wall/Window Type Extractor Fan Operating Instruction



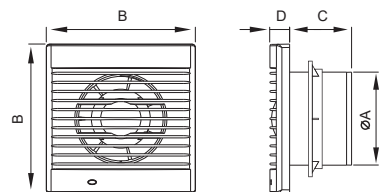
FLO Series

- SF100
- SF125
- SF150

3 Years Replacement Warranty - Void if Product is not installed by a licensed electrician.

1 PRODUCT DIMENSIONS

Dimensions



Unit:mm

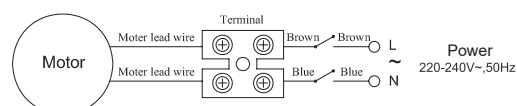
| Model | ØA | B | C | D |
|------------|-------|-------|------|------|
| 100mm (4*) | 98mm | 157mm | 66mm | 21mm |
| 120mm (5*) | 118mm | 157mm | 70mm | 21mm |
| 150mm (6*) | 148mm | 200mm | 81mm | 21mm |

2 TECHNICAL PARAMETERS

Notice: Below parameters are just for reference. Detailed should subject to the ones on product nameplate.

| Model | V/Hz | Power | Max Air Volume | Noise |
|------------|-----------------|-------|----------------|-------|
| 100mm (4*) | 220-240V~, 50Hz | 12W | 130m³/h | 34dB |
| 120mm (5*) | | 16W | 240m³/h | 34dB |
| 150mm (6*) | | 18W | 320m³/h | 35dB |

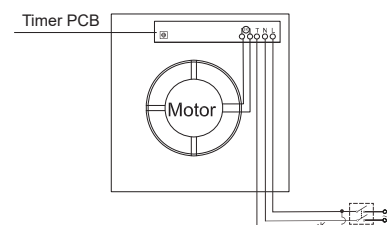
3 WIRING DIAGRAM



4 TIMER SYSTEM WIRING DIAGRAM AND INSTRUCTIONS

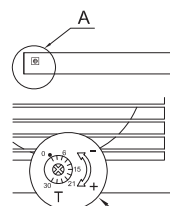
Notice: Timer is optional.

4.1: Timer system wiring diagram



Timer Wiring Diagram

4.1: Timer system time-adjusting diagram



Timer Wiring Diagram

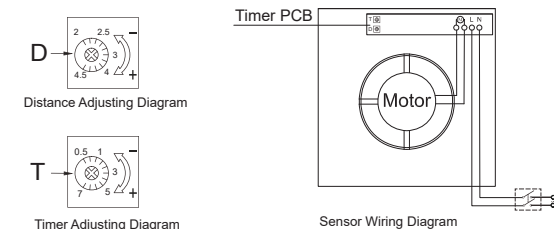
4.3 Timer system using instruction

The extractor fan with timer turns on when there is the power input supplied by control voltage. When it is disconnected the fan continues operating in time period within 1 to 30 minutes according to the timer settings. The turn-off delay time can be adjusted by turning the control knob clockwise to increase and counter-clockwise to decrease.

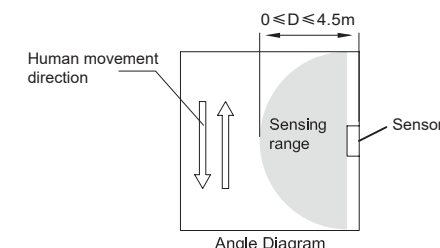
5 SENSOR WIRING DIAGRAM AND INSTRUCTIONS

Notice: Sensor is optional.

5.1: Sensor system wiring diagram



5.2: Sensor system performance specification



| Sensing Distance | Angle | Delay Time | Working Temperature |
|------------------|--------|------------|---------------------|
| 0 ≤ D ≤ 4.5m | ≤ 180° | 0.5-7min | -15°C-40°C |

5.3 Sensor system using instruction

The extractor fan with motion sensor turns on automatically when detecting movement in the distance range of 0 ≤ D ≤ 4.5m and the detection angle up to the 180° and operates until the motion is away, the fan will continue operating within 0.5min to 7min according to the timer setting and afterwards shut down, the sensing distance can be adjusted from 2m to 4.5m, The delay timer and distance can be adjusted by turning the control knob clockwise to increase and counter-clockwise to decrease, the factory original distance setting is 2m, timer setting is 0.5min.